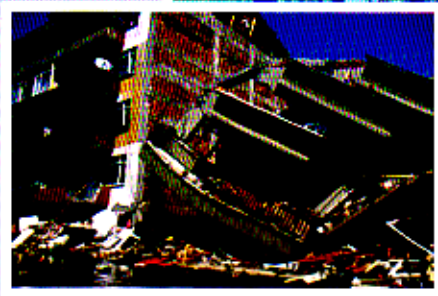


SECURING SOCIETY AGAINST CATASTROPHIC EARTHQUAKE LOSSES



**A Research and Outreach Plan
in Earthquake Engineering**



EARTHQUAKE ENGINEERING RESEARCH INSTITUTE



CAEE Canadian Association for Earthquake Engineering
ACGP l'Association Canadienne du Génie Parasismique

April 30, 200

Ms. Susan Tubessing
Executive Director
EERI
499 - 14 St., Suite 320
Oakland, CA 94612-1934

Dear Ms. Tubessing,

Re: EERI Research Plan – Securing Society Against Catastrophic Earthquake Losses

We have reviewed the Draft 11/02 version of the above research plan, and find it a very comprehensive and farsighted document.

Speaking on behalf of the Canadian Association for Earthquake Engineering (CAEE), which represents Canadian seismic engineering and geophysical community, we heartily endorse the plan.

Our experience has been that the greatest area of uncertainty in any analysis has been in the estimation of and representation of the seismic hazard, and it is gratifying to see emphasis put on this, as well as on structural assessment and performance. We also believe that assessing earthquake impacts is very important, as this represents full scale testing against which it is possible to calibrate computational models.

Our seismic code already benefits from the work done by the NEHRP studies, and we would fully expect that the result of research as outlined in the proposed plan would have even more benefit.

We look forward to future collaborations between EERI and CAEE.

Sincerely,

Donald L. Anderson, PhD, P.Eng.
Past President

Murat Saatcioglu, PhD.,P.Eng.
President

c/o Department of Civil Engineering, The University of Ottawa, Ottawa, ON., K1N 6N5



EARTHQUAKE ENGINEERING RESEARCH INSTITUTE

Board of Directors

Thomas D. O'Rourke, *President*
Chris D. Poland, *Past President*
Svetlana Brzev, *Vice President*
Ronald L. Mayes, *Secretary/Treasurer*

Sergio M. Alcocer
Donald Ballantyne
Bruce R. Clark

Mary C. Comerio
Sarah Nathe

Executive Director
Susan K. Tubbesing

July 30, 2003

Donald L. Anderson, Past President
Murat Saatcioglu, President
Canadian Association for Earthquake Engineering
C/o Department of Civil Engineering
University of Ottawa
Ottawa, ON., K1N 6N5
CANADA

Dear Donald Anderson and Murat Saatcioglu:

On behalf of the EERI Board of Directors, I would like to express our appreciation for your letter of endorsement of April 30, 2003. A copy of your letter will appear in the final publication of "Securing Society Against Catastrophic Earthquake Losses: A Research and Outreach Plan in Earthquake Engineering," which will be mailed to you in the near future.

As a new comprehensive vision from the earthquake engineering community, we believe the Plan represents the best opportunity to positively influence the reauthorizing legislation for the National Earthquake Hazard Reduction Program. By demonstrating broad community support, letters such as yours are a crucial part of the Plan. Thank you for joining this cooperative commitment to strengthen our communities and prevent catastrophic earthquake losses.

Sincerely,

Susan K. Tubbesing
Executive Director

SKT:ecg