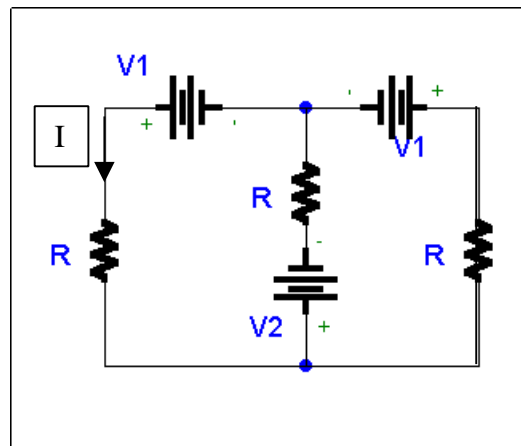


- Assignment due (no later than!) Wednesday, 1998.02.11, 2 P.M.  
NO ASSIGNMENT WILL BE ACCEPTED AFTER THIS DEADLINE!!
- Please drop your assignment in the ELG 1100 box (CBY 5-th Floor).  
Thank you!

## ELG1100 Assignment #2

### Problem 1:

Use KVL equations in the circuit of the following figure to find the value of  $R$  that will cause  $I = 0.5$  A when  $V_1$  is larger than  $V_2$  by 24 V



### Problem 2:

Using MATLAB find all currents and voltage drops across the resistors in the following two circuits:

